

ELEVATION VIEW

WIDTH VARIES

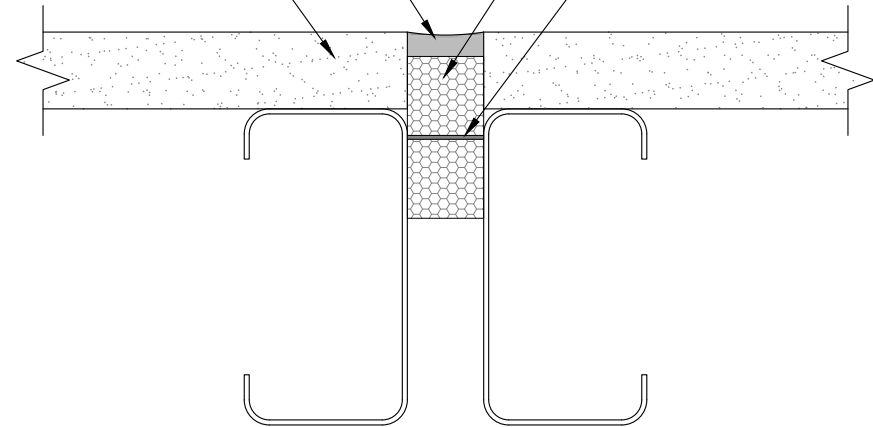
WILLSEAL APPROVED URETHANE OR SILICONE SEALANT OVER WILLSEAL PF100

WILLSEAL APPROVED URETHANE OR SILICONE SEALANT

PRE-FABRICATED WALL

WILLSEAL PF100

INTEGRAL BARRIER



PLAN VIEW

*The architecture, engineering, and design of the project using the Willseal products are the responsibility of the project's design professional. All products and systems must comply with local building codes and standards. This detail is for general information and guidance only and Willseal specifically disclaims any liability for the use of this detail. The project design professional determines, in its sole discretion, whether this detail or a functionally equivalent detail is best suited for the project. This detail is subject to change without notice. Contact Willseal to ensure you have the most recent version.*

**PF100**



Willseal Technical Support: 800-274-2813

Detail: Willseal PF100 at Pre-Fabricated Wall Joint, Secondary Seal

Drawn by: KAB

Checked by: SP

Scale: NTS

Date: 4/4/2022

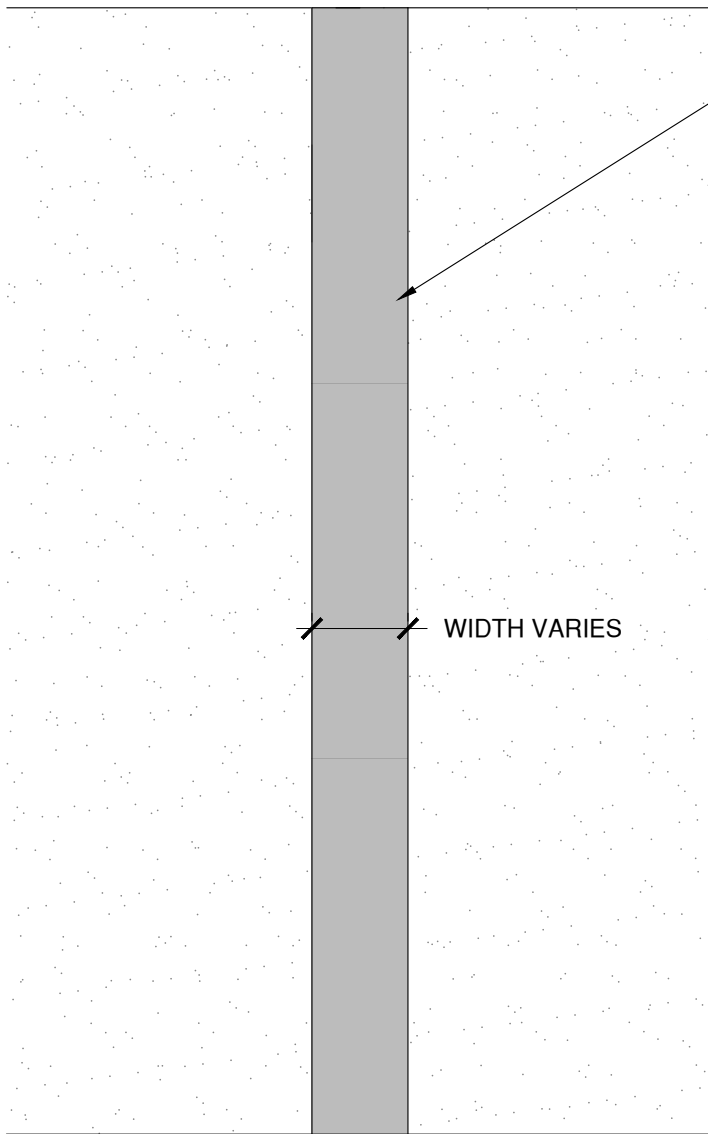
File Name:

WPF100-EJ-01

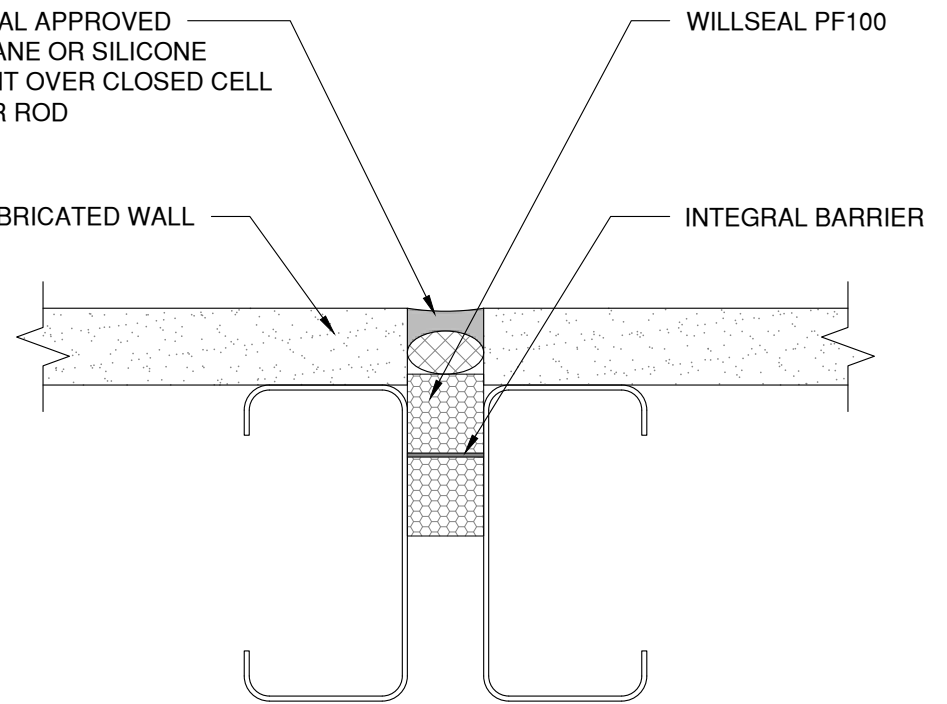


Construction Products Group

[www.tremcocpg.com](http://www.tremcocpg.com)



ELEVATION VIEW



PLAN VIEW

*The architecture, engineering, and design of the project using the Willseal products are the responsibility of the project's design professional. All products and systems must comply with local building codes and standards. This detail is for general information and guidance only and Willseal specifically disclaims any liability for the use of this detail. The project design professional determines, in its sole discretion, whether this detail or a functionally equivalent detail is best suited for the project. This detail is subject to change without notice. Contact Willseal to ensure you have the most recent version.*

**PF100**

Detail: Willseal PF100 at Pre-Fabricated Wall Joint, Secondary Seal with Backer Rod

File Name:  
**WPF100-EJ-02**

Drawn by: **KAB**

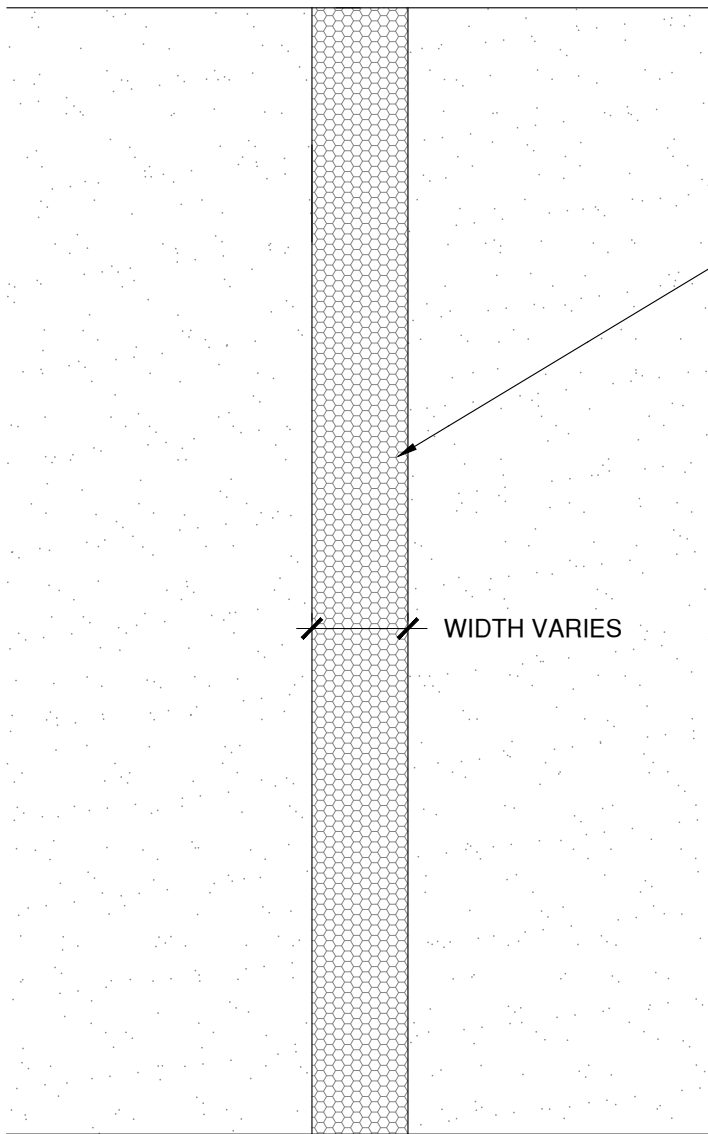
Checked by: **SP**

Scale: **NTS**

Date: **4/4/2022**



[www.tremcocpg.com](http://www.tremcocpg.com)

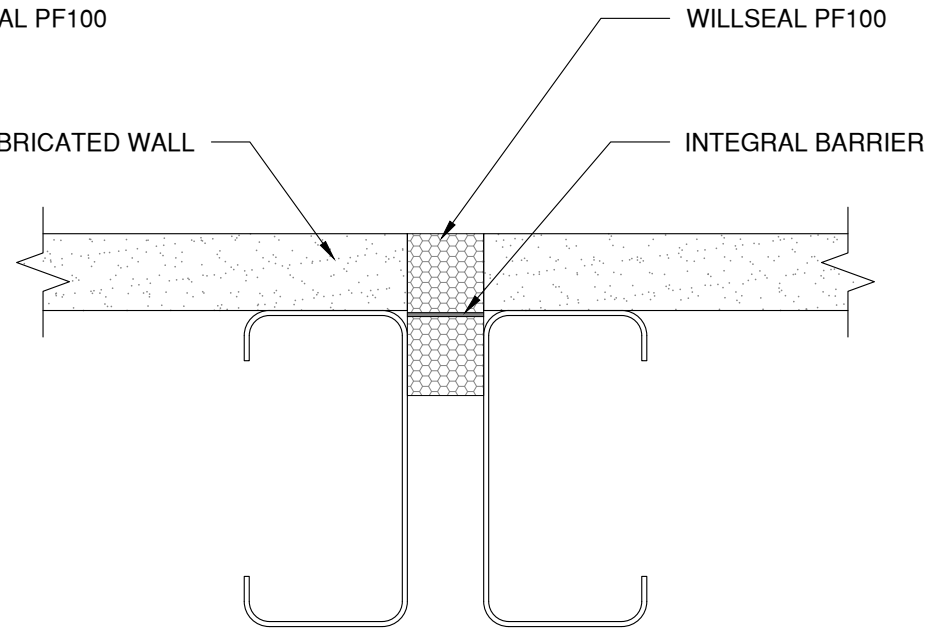


ELEVATION VIEW

WILLSEAL PF100

PRE-FABRICATED WALL

WIDTH VARIES



WILLSEAL PF100

INTEGRAL BARRIER

PLAN VIEW

*The architecture, engineering, and design of the project using the Willseal products are the responsibility of the project's design professional. All products and systems must comply with local building codes and standards. This detail is for general information and guidance only and Willseal specifically disclaims any liability for the use of this detail. The project design professional determines, in its sole discretion, whether this detail or a functionally equivalent detail is best suited for the project. This detail is subject to change without notice. Contact Willseal to ensure you have the most recent version.*

**PF100**

Detail: Willseal PF100 at Pre-Fabricated Wall Joint, Primary Seal

File Name:

WPF100-EJ-03



Willseal Technical Support: 800-274-2813

Drawn by: KAB

Checked by: SP

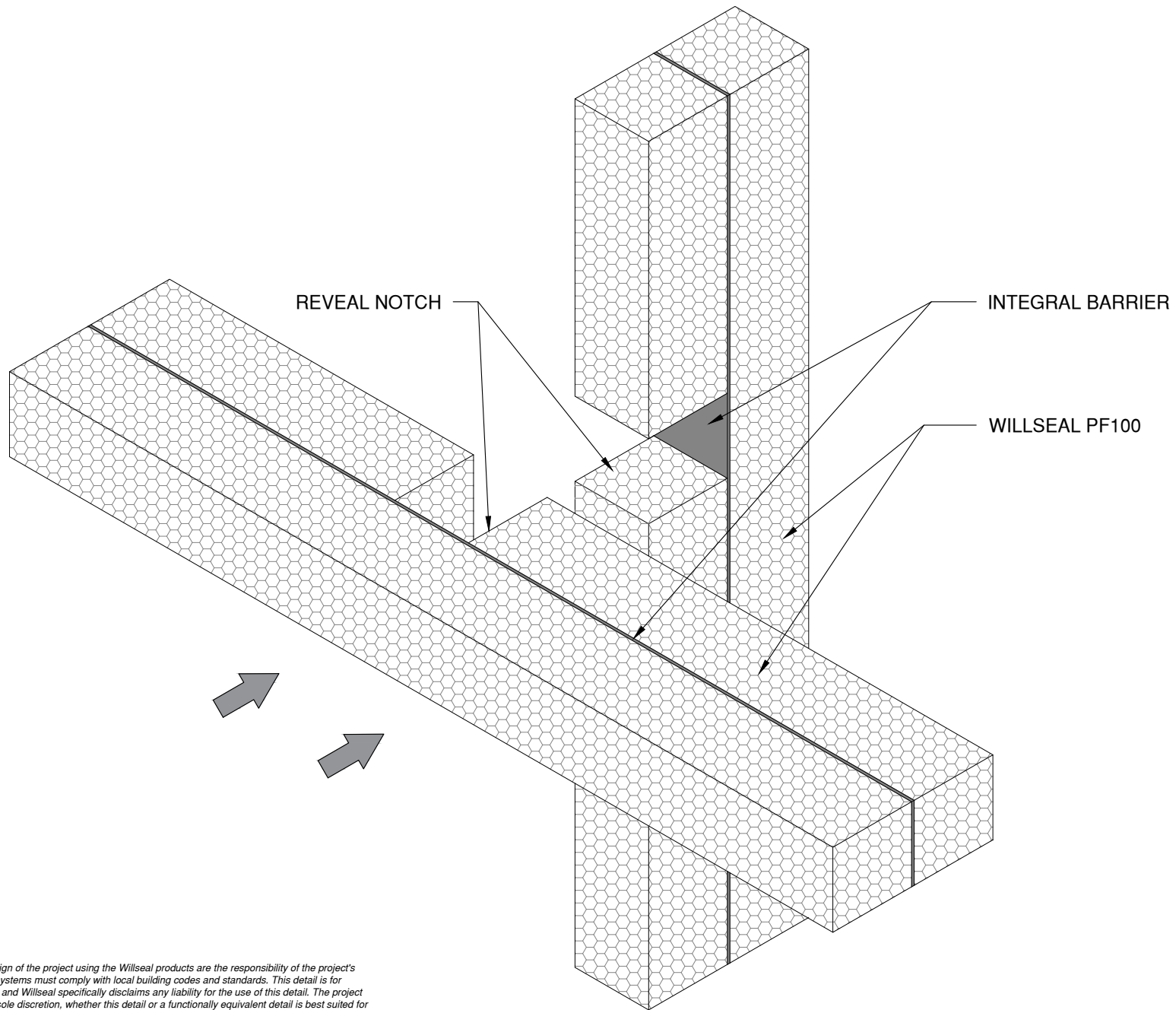
Scale: NTS

Date: 4/4/2022

[www.tremcocpg.com](http://www.tremcocpg.com)



Construction Products Group



*The architecture, engineering, and design of the project using the Willseal products are the responsibility of the project's design professional. All products and systems must comply with local building codes and standards. This detail is for general information and guidance only and Willseal specifically disclaims any liability for the use of this detail. The project design professional determines, in its sole discretion, whether this detail or a functionally equivalent detail is best suited for the project. This detail is subject to change without notice. Contact Willseal to ensure you have the most recent version.*

**PF100**



Detail: Willseal PF100 at Crucifix Intersection

File Name:

Drawn by: KAB

Checked by: SP

Scale: NTS

Date: 4/4/2022

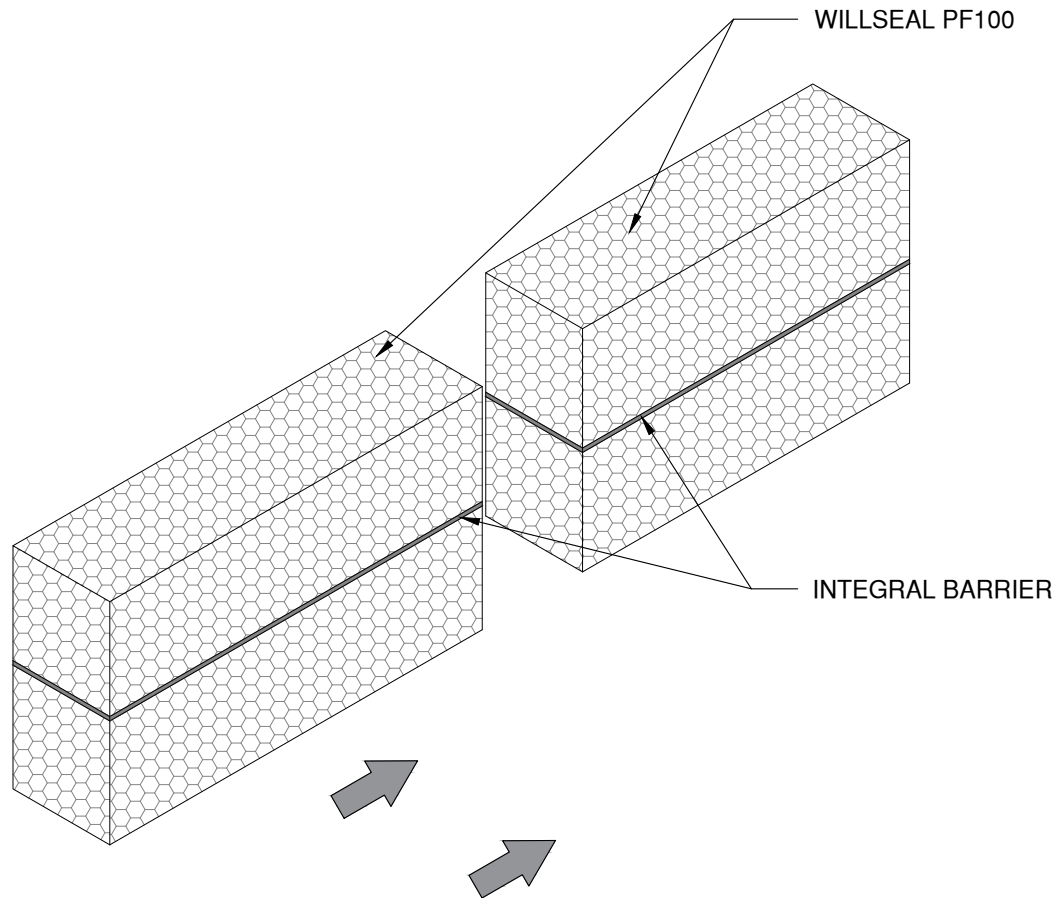
WPF100-G-01



Construction Products Group

Willseal Technical Support: 800-274-2813

[www.tremcocpg.com](http://www.tremcocpg.com)



*The architecture, engineering, and design of the project using the Willseal products are the responsibility of the project's design professional. All products and systems must comply with local building codes and standards. This detail is for general information and guidance only and Willseal specifically disclaims any liability for the use of this detail. The project design professional determines, in its sole discretion, whether this detail or a functionally equivalent detail is best suited for the project. This detail is subject to change without notice. Contact Willseal to ensure you have the most recent version.*

**PF100**

 Willseal Technical Support: 800-274-2813	Detail: Willseal PF100 at Butt Joint			File Name:	 Construction Products Group
	Drawn by: KAB	Checked by: NF	Scale: NTS	Date: 11/7/2022	
<a href="http://www.tremcocpg.com">www.tremcocpg.com</a>					